



# PORTABLE MODEL

## PORTABLE GAS TANKLESS WATER HEATER

### INSTRUCTION MANUAL

Keep this manual with you after your unit has been installed, you may need it for further technical information.



[WWW.MAREY.COM](http://WWW.MAREY.COM)





Congratulations!

You've just purchased a new Marey Portable tankless water heater and will soon begin to enjoy the benefits of "going tankless."

Take the time to thoroughly read and understand this safety and installation manual in its entirety before you attempt to install your new Power Gas tankless water heater, as it contains important safety tips and instructions.

Please carefully read all instructions and warnings. Should you have any questions, please visit [www.marey.com](http://www.marey.com) for installation videos and FAQ. Please keep this manual for future reference.



## INDEX

WARNINGS.....	04
GENERAL DESCRIPTION.....	05
COMPONENTS.....	05
HOW TO START.....	06
INSTALLATION.....	07
TECHNICAL SPECIFICATIONS.....	08
ADJUSTMENTS.....	08
TROUBLE-SHOOTING.....	09
CUSTOMER SERVICE.....	11
OTHER PRODUCTS.....	11



## WARNINGS

### Caution

If you detect a possible case of gas leak, contact your local gas supplier. There may be some conditions which can diminish the intensity of the smell, making it difficult to identify a gas leak.

- Outdoor use only.

- Liquid Propane Gas is denser than air and tends to condense first on lower areas making it difficult to detect at nose level.

- Before attempting to start the unit, use a soapy product to check all gas fittings and connections. Any bubbling at a connection indicates a gas leak that must be fixed.

- Installing gas detectors is highly recommended for both Liquid Propane and Natural gas applications. Please, turn to local laws, regulations and manufacturer's recommendations in order to correctly install a gas detector in your house.

- Units using Natural gas are different from Liquid Propane models. For your safety do not use Natural gas with Liquid Propane and vice versa.

- You should never attempt to convert the water heater from Natural Gas to Liquid Propane.

- Do not connect the unit to a fuel type that is not in accordance with the specifications to avoid possible fire, equipment damage or personal injury.

- DO NOT mount the unit onto a combustible surface (including plywood or other wood or paper products). Drywall, gypsum or other non-combustible surfaces are acceptable.

### Other precautions

1. This unit only uses Liquid Propane Gas.

2. Please do not place your hands or other objects on top of the heater or the exhaust gas pipe, it is very hot.

3. If you detect smell of gas, turn off the gas valve at the tank immediately.

4. Do not expose the heater to strong wind conditions.

5. Do not leave unattended.

6. Do not over tighten the gas regulator connection to the unit with a wrench. This may break the gas inlet.

**WARNING!** There is water contained in the coils of your water heater at all times. If your water heater is exposed to freezing temperatures, the water in the coils could freeze, causing a break in the heat exchanger of the unit, or the supply and return lines. This kind of damage will result in water running freely into the space where the water heater is located, with can cause flooding. DO NOT install this water heater where it may be subjected to a freeze. If your water heater is in an area where freezing is a possibility, you must turn off the water to the heater and drain it of any water by using the valve stem at the bottom of the unit and disconnecting the warm water line. Leave the valve stem and the warm water line disconnected until you intend to use the water heater.



## GENERAL DESCRIPTION

The MAREY PORTABLE liquid propane gas water heater is capable of supplying 1.5 GPM (gallons per minute) – 5 (LPM liters per minute). This unit has a standard ½” NPT pipe fittings and an adapter for using a standard garden hose for inlet water supply.

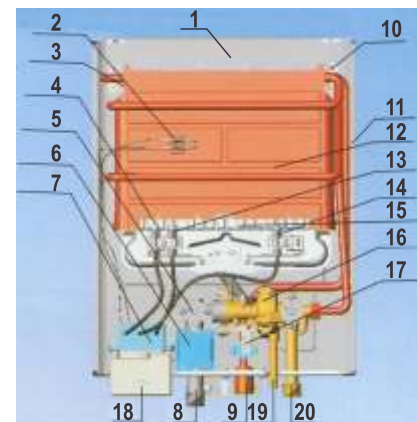
Ignition is automatic and powered by 2 “D” cell batteries (not included). Burners start when water pressure is more than 5 PSI and turn off when water is shut off. A shower head with multiple spray patterns is included.

For a gas supply a standard 20 pound-propane cylinder (not included) is required. This is similar to the gas tanks used with outdoor grills. A regulator with a hose is available with the heater.

An additional safety feature is an automatic 20 minutes shut off timer that is reset each time operation stops or the shower head is turned off and back on.



## COMPONENTS



- |                            |                            |
|----------------------------|----------------------------|
| 1- Portable                | 11 - Back Plate            |
| 2 - ODS Device             | 12 - Heat Exchanger        |
| 3 - Temperature Controller | 13 - Ignition Pin I        |
| 4 - Sensor Pin             | 14 - Ignition Pin II       |
| 5 - Gas Adjusting Valve    | 15 - Burner                |
| 6 - Solenoid Valve         | 16 - Water Adjusting Valve |
| 7 - Pulse Generator        | 17 - Micro-Active Switch   |
| 8 - Gas inlet              | 18 - Cell Box              |
| 9 - Hot Water Outlet       | 19 - Release Device        |
| 10 - Wall Mounting Holes   | 20 - Water Inlet           |



## HOW TO START

1. Check the box for any damage. If damage is caused because of shipment, it must be reported immediately.

2. Make sure you have all the parts:

a. Gas Regulator and Hand Shower Nozzle with ON/OFF Control.



b. Hardware Pack and ½" NPT to Garden Hose Adapter.



3. If you are using a regular standard garden hose, please use the ½" NPT to connect the garden hose adapter included. Please use the sealing tape (Teflon) on the threads to avoid leaks. Also check if the screen filter from the water inlet is in its place, make sure it is cleaned from any particles blocking the water entrance. Having this done, then you are ready to attach the water input/garden hose.

4. Install the gas supply into the inlet gas pipe. Do not over tighten it since this can break or crack the inlet pipe. After you tight the inlet pipe, make sure it cannot be moved so as to avoid any gas leak or malfunction.

5. Connect the shower nozzle to the water outlet. Make sure you use Teflon and connect it by hand pressure only.

6. Install the two batteries size "D". The batteries case will show you how to install the batteries correctly.

7. Use the top and bottom tab of the back cover heater to hang it from the wall. Do not use the handle as a hanger. Make sure you install the heater carefully using a backup wrench in the gas inlet hose to avoid stress and break it.

8. Attach the gas regulator by hand pressure to avoid breaking any parts and make sure the gas tank valve is in the off position.

Before going to the HOW TO USE section

Attention: make sure there are not flammable materials around, especially gasoline or other fumes that can ignite. No objects can be placed on the top of the heater since they can fall or burn. Both the top and the exhaust of the unit will be hot.



## INSTALLATION

1. Turn on the incoming water supply ensuring that you have an adequate water pressure, between 5-145 PSI.

2. Check that the shower nozzle is in the off position.

3. Open the gas valve on the cylinder all the way.

4. If a gas leak is detected, turn off the gas valve immediately.

5. Set the water regulator knob all the way to the left.

6. Set the gas regulator knob on the front of the unit to the half way mark.

7. Turn the shower head knob to the "ON" position.

8. You will hear a series of clicks and the burner will ignite. If the burner does not ignite after 5 seconds, turn off the heater and read the "Trouble shooting" section.

9. To ensure the draining of water after its use, open the drain valve (ribbed cylindrical stem next to the water input valve).

**IMPORTANT:** Ensure that the drain valve is open and water is drained from the unit after each use to avoid internal damage to the water regulator, especially if the outside temperature is around or below 32°F or 0°C.

The lack of proper drainage in your unit may cause damage to the heater that will not be mended. See our warranty policy.



## TECHNICAL SPECIFICATIONS

### TECHNICAL SPECIFICATIONS - PORTABLE

Fuel Type	LPG (Liquid Propane Gas)
Model	GA5PORT
Activation Flow Rate	2.2 LPM / 0.58 GPM
Maximum Flow Rate	5 LPM / 1.4 GPM
BTU/h	35,000 BTU/h
Related Gas Pressure	0.4 PSI
Aplicable Water Pressure	3.6 - 145.0 PSI
Ignition	Electric Pulse, D Cell Battery Powered (No electrical connection required)
Protections	Auto-cut off water control, automatic ignition, anti-dry combustion protection, over-pressure, overheating and flameout protection
Width x Height x Depth	11.4" x 17.0" x 4.7"
Weight	12 lbs
Pipe Fittings	½" NPT, incoming/outgoing water & gas
Energy Efficiency	54 - 87%

TEMPERATURE INCREASE PER GPM					
Model	Gas Setting	0.5 GPM	1.0 GPM	1.5 GPM	2.0 GPM
GA5L Portable	Highest	96°	48°	32°	25°
	Lowest	34°	17°	11°	9°

\*Highest gas setting: set for Winter/High  
\*Lowest gas setting: set for Summer/Low

\*Temperature increases listed are based on use of the water heater under optimal conditions with an incoming water temperature of 48°F. Variable factors such as incorrect or imperfect installation or warmer incoming water temperature may yield different results.

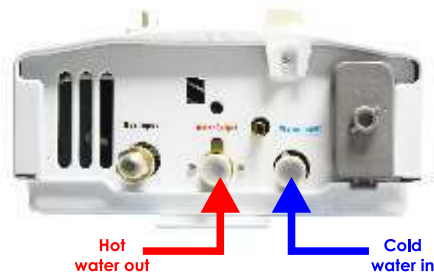


## ADJUSTMENTS

The temperature of the incoming water together with the amount of heat applied are influential in the temperature of the outgoing water.

1. Set the gas regulator to low position and the water regulator to high position. This is the lowest setting available.

2. To raise the outgoing temperature, turn the gas valve to the right. There will be a slight delay between increasing the gas supply and the increase in water temperature. If you want the highest setting available, then turn the gas regulator all the way to the maximum. Adjust slowly and check the temperature frequently. The water might reach high temperatures which can harm your skin. Make sure you test the water before using it.



## TROUBLE-SHOOTING

The unit does not start at all:

1. Make sure you have new batteries installed in the correct position. Check the cap of the battery case for instructions on how they should be installed.

2. Generally, the main reason why most units do not ignite is because there is not enough water pressure. The unit must have a minimum of 5 PSI (pounds per square inch) of sustained water pressure to turn on.

3. Verify that the water hose is connected properly. If this is not well-connected, the unit will not work. Check that the incoming water pipe is on the far right and the outgoing one is in the middle.

4. During shipping, if a wire had been disconnected, make sure that the gas valve and the switch are shut off. The front cover is held by four screws, two at the top and two at the bottom. The knobs can be pulled off. All the wiring is done by pushing together plastic connectors and everything becomes visible when the unit is dismantled.

5. There is the possibility of finding some kind of epoxy or debris within the water regulator. Check that the water inlet filter screen is clean. To flush the system you can reverse the hookup by taking the water inlet pipe and hooking it up to the water outlet side and back. If the gas cylinder is contaminated by air, turn the unit on and off several times to purge the air from the gas.

6. Verify that you have your water supply (cold water inlet) and shower handle (water outlet).

Water flows through the unit, but there is no hot water coming out:

1. New batteries may be required for the ignition switch. Verify that the batteries are aligned in the proper polarity (+/-). Check the battery case for instructions on how to install the batteries properly.

2. Check that the water pressure is, at least, 5 PSI sustained.

3. Ensure that the Liquid Propane regulator is threaded all of the way to the unit and that you have an adequate amount of gas in your propane bottle.

4. Verify that you have hooked up both the incoming and outgoing water supply properly. The shower head should be attached to the outgoing water inlet (located at the center) and the water inlet should be attached to your incoming connection (located at the far right).

Water is coming out warm:

1. Check if there is a blue flame on the screen. If you see a yellow flame it could mean a breakdown in the gas regulator. Please call Marey Heater Corp directly if this happens, do not attempt to use it.

2. The unit is being operated at an altitude above 6,000 feet. The unit has been tested at altitudes of more than 7,000 feet but we only recommend using it below elevations of no more than 6,000 feet.

] The unit starts for a short amount of time and then shuts off:

1. Check that the thermocouple is able to complete the circuit by checking that water is flushed in the heat exchanger. If the heater shuts off is because the temperature is either too low or high to complete its circuit.

2. Look if the gas sensors have come loose or check that it is properly connected.

3. If you run out of gas, have low gas, or your Propane gas cylinder is contaminated with air (especially new tanks upon their first filling), then cycle the unit on and off by using the shower head switch several times to purge the air from the gas.

4. Do not expose the water heater to strong winds.

5. This unit activates at a sustained water pressure of 5 PSI. If your house water pressure is below the minimum the unit will not ignite. You will need a sustained water pressure of approximately 40-60 PSI for an adequate use.

**Perfect for Camping!**



## CUSTOMER SERVICE



At Marey, we pride ourselves on the excellence of our customer service and support team.

Please feel free to contact us if you have any questions about our products, warranty service, or if you need assistance installing a unit. We also strive for continuous improvement, so we welcome your comments, feedback and suggestions.

**1-855-MAREY-55**  
**customerservice@marey.com**

## OTHER PRODUCTS

Please visit our website to get to know more about other Marey products.



ECO110



POWER PAK



ECO126



GAS PORTABLE



POWER GAS



POWER GAS 16L ETL

**Toll Free: 1-855-627-3955**  
**1-855-MAREY-55**

**www.marey.com**