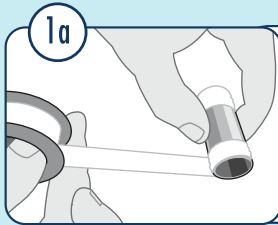
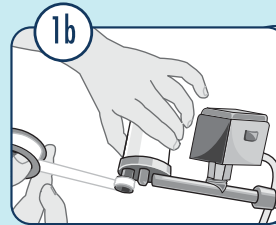


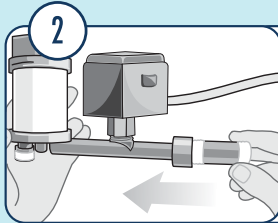
# HOW TO INSTALL YOUR SHOWER HEATER



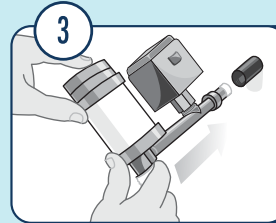
**1a.** Wrap with teflon:  
Both ends of a  $\frac{1}{2}$ " straight nipple (not included).



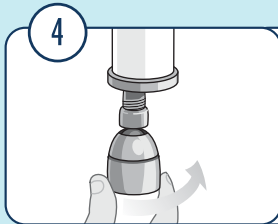
**1b.** Wrap with teflon:  
The threads on the heater output.



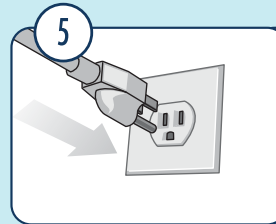
**2.** Screw one end of the nipple into the back of the heater.



**3.** Screw the heater onto the pipe, holding the heater cover firmly. Tighten the heater with an adjustable wrench.

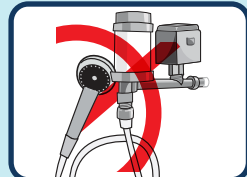


**4.** Turn faucet on and allow the water run for 10 seconds, then attach the shower head.



**5.** Plug the heater to a receptacle\* 3.5 feet away from the shower area.  
\*30 amp electric circuit for exclusive use of the heater.

\*30 amp electric circuit for exclusive use of the heater.



**DO NOT use any other shower head with this equipment.**

## CONGRATULATIONS INSTALLATION IS NOW COMPLETE!

Once the faucet is turned on, hot water will come out instantly.  
Set the temperature by regulating the flow of water.

**DO NOT USE EXTENSIONS.**

**Warranty:** 2 years in parts and labor. **Purchase receipt** is required.

**It is recommended to use the original shower head. Restricting the water flow could damage your unit.**